

COAST EXCLUSIVE BRANDS: AQUA PRO



No more kinked hoses!

Aqua Pro™

27980



AQUA PRO METAL HOSE ELBOWS

- For RV, Home Faucet or Behind Washer
- Features Quick Grip For Easy On & Off

Hose elbows allow the water to flow freely by helping to eliminate kinks in the hose. Made of non-toxic material, with a durable nickel-plated finish for long lasting, trouble-free use.

Metal Hose Elbow, Card of 1:

27980 45° Elbow #27980 1



5/8" size has hose-end protector

Easy-to-thread ends

High-pressure RV white water lines. Drinking water quality: tasteless, odorless and safe. Easy to coil. Non-toxic.

Aqua Pro Water Line:

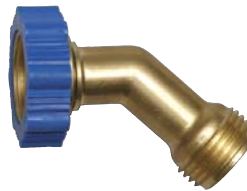
20150 1/2" x 25' #7513-25CP 10
20151 1/2" x 50' #7513-50CP 10
21317 5/8" x 25' #8513-25CP 10
21318 5/8" x 50' #8513-50CP 5

AQUA PRO DRINKING WATER HOSES

Aqua Pro™



28342



AQUA PRO BRASS HOSE ELBOWS

- For RV, Home Faucet or Behind Washer
- Features Quick Grip For Easy On & Off

Extra strength brass for heavy-duty use. 45°

hose elbows allow the water to flow freely by helping to eliminate kinks in the hose.

Brass Hose Elbow:

28342 45°, Carded #28342 1

Aqua Pro™



24987



24988

AQUA PRO PLASTIC HOSE ELBOWS

- For RV, Home Faucet or Behind Washer
- Features Quick Grip For Easy On & Off

45° and 90° hose elbows allow the water to flow freely by helping to eliminate kinks in the hose. Plastic elbow is made of food-grade, non-toxic ABS plastic with UV stabilizer for long-lasting, trouble-free use. Carded.

Plastic Hose Elbow:

24988 Hose Elbow, 90° #24988 20
27987 Hose Elbow, 45° #27987 24

COAST EXCLUSIVE BRANDS: AQUA PRO

Aqua Pro™



Deluxe Regulator



Standard Regulator

AQUA PRO RV WATER REGULATOR

Protect your RV plumbing system from damage due to high pressure. Outlet pressure is preset to 45psi. Fits all standard garden hose and hose bib type connections. The "Easy Gripper" makes installation easy, and eliminates the need for tools. Made of high quality, food grade, non toxic materials that meet IAPMO and NSF requirements. Standard models include an "Easy-Gripper" and a washer w/strainer, are rated for 150psi, max, and have a 1yr warranty. Deluxe models include an "Easy-Gripper" and a washer w/strainer, male and female protective covers with "Keeper" straps to keep dirt and debris out during storage, are rated for 300psi, max, and have a 2 yr warranty.

Water Regulator:

27549 Standard, Cd/1 #27549 48

27550 Standard, Box/1 #27550 50

27866 Deluxe, Cd/1 #27866 96

27867 Deluxe, Box/1 #27867 10



27784



27866

Universal Gauge Adapter

Monitor water supply pressure to your RV plumbing system to help prevent damage due to high pressure. Can be used inline with any hose bib type water regulator or any water line with a garden hose type connection. Rated for 300psi. Made of food grade, non-toxic materials. 1 year warranty.

Gauge Adapter:

27784 Universal, Cd/1 #27784 6

Aqua Pro™



AQUA PRO LEAD-FREE WATER HEATER ANODE RODS

- 18% more magnesium for extended protection.
- Significantly extends the water heater tank life.

The single most important factor in tank life is the condition of its anode. Aqua Pro Magnesium Anode Rods will attract the elements that cause corrosion, protecting the tank from those elements. Simply replace your MPT drain plug with the Aqua Pro Anode Rod to protect your tank. For best results the anode rod should be replaced annually.

Magnesium Anode Rod for Suburban & Morflo Water Heaters, Lead-Free, 9" L, 3/4" MPT:

69716 Lead-free, CD/1 #69716 1

69717 Lead-free, Bulk #69717 1

Magnesium Anode Rod for Atwood Water Heaters, Lead-Free, 4-1/2" L, 1/2" MPT:

69718 Lead-free, CD/1 #69718 1

69719 Lead-free, Bulk #69719 1



Aqua Pro™

AQUA PRO WATER PLUMBING REPAIR KIT

Water plumbing repair kit works with all plumbing systems. No tools needed; uses SeaTech quick-connect fittings.

28266 Water Plumbing Repair Kit #35WK-02AQUA 1

Aqua Pro™



27838-9

27917

AQUA PRO CAP & PLUG

Keep dirt & debris out of fresh water hoses or regulators. Male threaded replacement plugs for most water fills with brass garden hose connections. Female threaded cap for use on any male threaded garden hose end or water regulator. Will fit any 3/4" male garden hose thread. Includes strap. White.

27838 Plug & Strap, Bulk #27838 1

27839 Plug & Strap, CD/1 #27839 1

27917 Cap & Strap, CD/1 #27917 1

COAST EXCLUSIVE BRANDS: AQUA PRO



Aqua Pro™

Aqua Pro™

HAND PUMP KIT

Freeze-proof your water system the quick and easy way. Pump antifreeze into lines and supply tank through the city water inlet; use pump for many other liquid transfer needs.

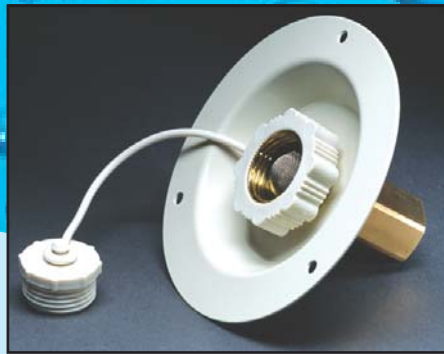
21364 Hand Pump Kit #P21364 12

Aqua Pro™

AQUA PRO WATER FILLS & CHECK VALVES

AQUA PRO CITY WATER FILLS

Recessed and surface mount models to fit all applications. Direct replacement for Marshall Brass and JR Products models. All Aqua Pro models are made of non-toxic materials, have "poppet" style check valves, 1/2" pipe thread and are certified to IAPMO and NSF standards.



Recessed



Surface Mount

RECESSED MODELS

Recessed models are 4.5" outside dia. and require a 3.5" dia. cutout. Available in metal or plastic. Metal is powder coated for a long lasting finish. Plastic is UV stabilized for durability.

Metal Recessed Mounting Flange w/1/2" FPT:

- 27870** Colonial White, Bulk #27870 1
- 27882** Colonial White, CD/1 #27882 1
- 27885** Polar White, Bulk #27885 1
- 27886** Polar White, CD/1 #27886 1

Plastic Recessed Mounting Flange w/1/2" MPT:

- 27889** Colonial White, Bulk #27889 1
- 27890** Colonial White, CD/1 #27890 1
- 27887** Polar White, Bulk #27887 1
- 27888** Polar White, CD/1 #27888 1

MODELS WITH NO MOUNTING FLANGE

No Mounting Flange w/1/2" FPT:

- 27868** Bulk #27868 1
- 27880** CD/1 #27880 1

SURFACE MOUNT MODELS

Surface mount models are available in metal, plastic and aluminum. Metal is powder coated for a long lasting finish. Plastic is UV stabilized for durability. Aluminum has a "brushed" finish. Surface mount models are 3" outside dia., and require a 1-1/4" dia. cutout.

Aluminum Surface Mounting Flange w/1/2" FPT:

- 27869** Bulk #27869 1
- 27884** CD/1 #27884 1

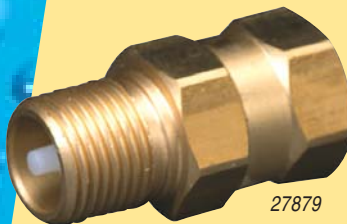
Metal Surface Mounting Flange w/1/2" FPT:

- 27883** Polar White, Bulk #27883 1
- 27881** Polar White, CD/1 #27881 1

Plastic Surface Mounting Flange w/1/2" MPT:

- 27892** Colonial White, CD/1 #27892 1
- 27895** Polar White, Bulk #27895 1
- 27893** Polar White, CD/1 #27893 1

27915



27879

AQUA PRO CHECK VALVES

Direct replacement for Marshall Brass and for Hydronamic Products. Aqua Pro models are made of non-toxic, food-grade materials, have 1/2" pipe thread, and are certified to IAPMO and NSF standards.

Aqua Pro Check Valve:

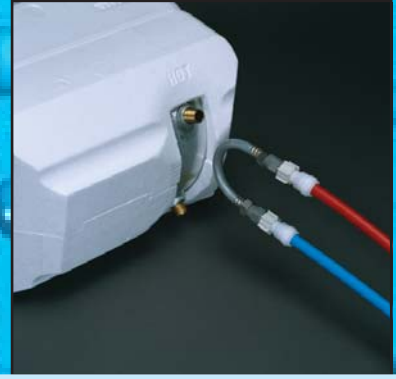
- 27915** 1/2" MPT x 1/2" MPT, Bulk #27915 1
- 27916** 1/2" MPT x 1/2" MPT, CD/1 #27916 1
- 27871** 1/2" MPT x 1/2" FPT, Bulk #27871 1
- 27879** 1/2" MPT x 1/2" FPT, CD/1 #27879 1

COAST EXCLUSIVE BRANDS: AQUA PRO

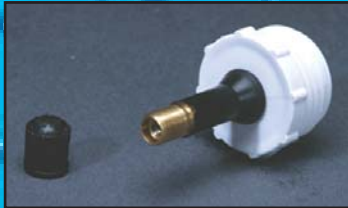
AQUA PRO WINTERIZING KITS



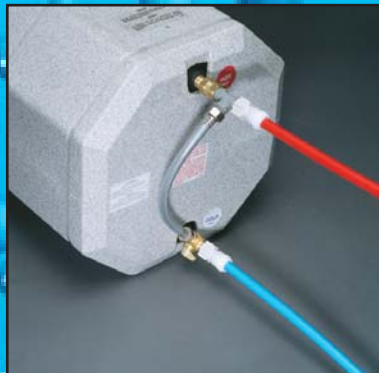
Permanent by-pass kits are available in 8" (27909) and 12" (27911) sizes. They are permanently installed to allow simple tank isolation, annually.



The temporary by-pass kit (27913) completely isolates the water heater from the system, to save anti-freeze during the winterization process.



The blow-out plug (27898) has no valve, and is to be used for draining water lines. The blow-out valve (21363) does have a valve, and can be used for draining water lines, as well as for leak tests.



The single valve kit (27912) is permanently installed to allow simple tank isolation, annually, using a single valve. This is for areas where access to valves may be limited.



The siphon kit (27910) allows you to easily divert the pump intake from the RV tank to an anti-freeze bottle for easy winterizing.

AQUA PRO PERMANENT WATER HEATER BY-PASS KITS

Aqua Pro Winterizing kits make preparing your RV or boat for winter storage a breeze. All components are made of the highest quality, food-grade, non-toxic materials for trouble-free winterization. Aqua Pro kits let you by-pass the water heater when winterizing water lines to save anti-freeze.

These kits feature 1/4 turn valves to quickly and easily bring water heater back "on line."

27909 8" Permanent By-Pass Kit for 6-Gal. #27909 24

27911 12" Permanent By-Pass Kit for 10-Gal. #27911 24

27912 12" Single Valve By-Pass Kit #27912 24

AQUA PRO 8" TEMPORARY WATER HEATER BY-PASS KIT:

27913 8" Temporary By-Pass Kit #27913 48

AQUA PRO WATER SYSTEM SIPHON KIT:

Made of non-toxic components. Quickly diverts pump intake to anti-freeze bottle for winterizing water lines.

27910 Water Siphon Kit #27910 48

AQUA PRO COMPLETE BLOW-OUT PLUG

Complete blow-out plug for standard garden hose threads holds pressure to help find leaks. Aids in the removal of water from lines.

21363 Complete Blow-Out Plug #21363 10

AQUA PRO WATER LINE DRAINER BLOW-OUT PLUG

Water line drainer blow-out plug for standard garden hose threads does not hold pressure. Aids in the removal of water from lines.

27898 Blow-Out Plug w/o Valve #27898 20

Aqua Pro™

Winter Protection = Summer Fun



COAST EXCLUSIVE BRANDS: AQUA PRO

AQUA PRO COILED WASHDOWN HOSES WITH NOZZLE

- 1/2" Inner Diameter
- UV Resistant
- 3/4" Solid Brass Fittings
- Self-Coiling, No Kink, Space Saving Design
- Non-Drinkable Hose
- 6 Position Adjustable ABS Plastic Nozzle.

Washdown hoses with nozzle:

20092 25' Coiled Washdown Hose with nozzle,
25' Polyurethane Hose
#P-0441BA [5](#)

20098 50' Coiled Washdown Hose with nozzle,
50' Polyurethane Hose
#P-0442BA [6](#)

